

e-connectware[™] - *For Fashion Logistics & Retail*

TAGSYS designs and manufactures a comprehensive multi-band RFID infrastructure for item-level tracking in a variety of industries. This universal infrastructure includes purpose-built readers and tags, as well as RFID management software, all designed to work together seamlessly in the most demanding environments. TAGSYS products automate labor-intensive processes, authenticates and safeguards goods, and enables real-time inventory and asset visibility.

With a proven track record of delivering reliable, high performance production systems, TAGSYS has deployed over 200 million tags and 90,000 reader systems to over 500 customers in more than 40 countries.

TAGSYS RFID solutions are currently deployed in a range of highly specialized vertical markets that include: Libraries, Textile Services, Pharmaceutical, and Fashion/Apparel.

The company is headquartered in Massachusetts with offices and R&D Centers in France and in Hong Kong.

WHY RFID?

Today's fashion manufacturers and retailers require technologies that help them increase operational efficiencies and reduce operating costs to gain competitive advantages. Many manufacturers and retailers have recognized the positive impact that Radio Frequency Identification (RFID) has had on their business processes while delivering a recognized ROI.

Due to complex supply chains and distribution channels, RFID systems in fashion and retail markets may be scattered throughout multiple distribution centers and across store networks. Managing the numerous RFID data flows and systems is now made easier with TAGSYS e-connectware[™]. TAGSYS e-connectware simplifies global RFID integration and deployment, and helps fashion brands take advantage of their RFID infrastructures by providing visibility on products and systems throughout global supply chains and store networks.

TAGSYS E-CONNECTWARE[™]

Through a set of advanced management and administrative functions, TAGSYS e-connectware enables fashion and retail organizations to efficiently leverage the true value of RFID data to optimize and manage their businesses.

TAGSYS e-connectware filters and delivers meaningful RFID event read data to drive actionable business decisions and improve operational efficiencies while simultaneously driving down system administration and maintenance costs.

E-CONNECTWARE FOR FASHION LOGISTICS & RETAIL

TAGSYS designed this version of e-connectware to address the unique requirements of fashion manufacturers and retailers. e-connectware aggregates RFID data to European Article Number (EAN) data, without any visible changes in existing software processes to provide immediate benefits to fashion retailers.

TAGSYS e-connectware for Fashion Logistics & Retail tracks individual items from manufacturing to retail checkout. Various modules are available that individually offer value-added features at each step in the logistics and distribution processes and at the retail level.

The e-connectware server is the critical component that processes information from the various modules. It also facilitates the deployment of the RFID infrastructure, monitors remotely distributed RFID devices, and generates actionable business reports.

E-CONNECTWARE LOGISTICS MODULES :

■ **Commissioning Module**

This critical module helps track individual RFID-tagged items throughout the distribution cycle to point-of-sale. Linked to an RFID printer, this module associates the RFID tag's unique chip number with the item's reference number and saves this information in the ERP database. This module is required to install any other e-connectware module.

■ **DC Receiving Module**

Used at the distribution center, this module helps sort and track inbound shipments by comparing the contents of individual boxes against the Advanced Shipping Notice (ASN). Alarms are automatically triggered when discrepancies are identified, and critical information about each item is immediately saved in the warehouse stock count to ensure accuracy. (e-connectware's "DC Receiving Module" is compatible with TAGSYS' UTS 400 UHF Tunnels, TAGSYS' UHF Conveyor Station and TAGSYS' Portable UHF Station.)

■ DC Inventory Module

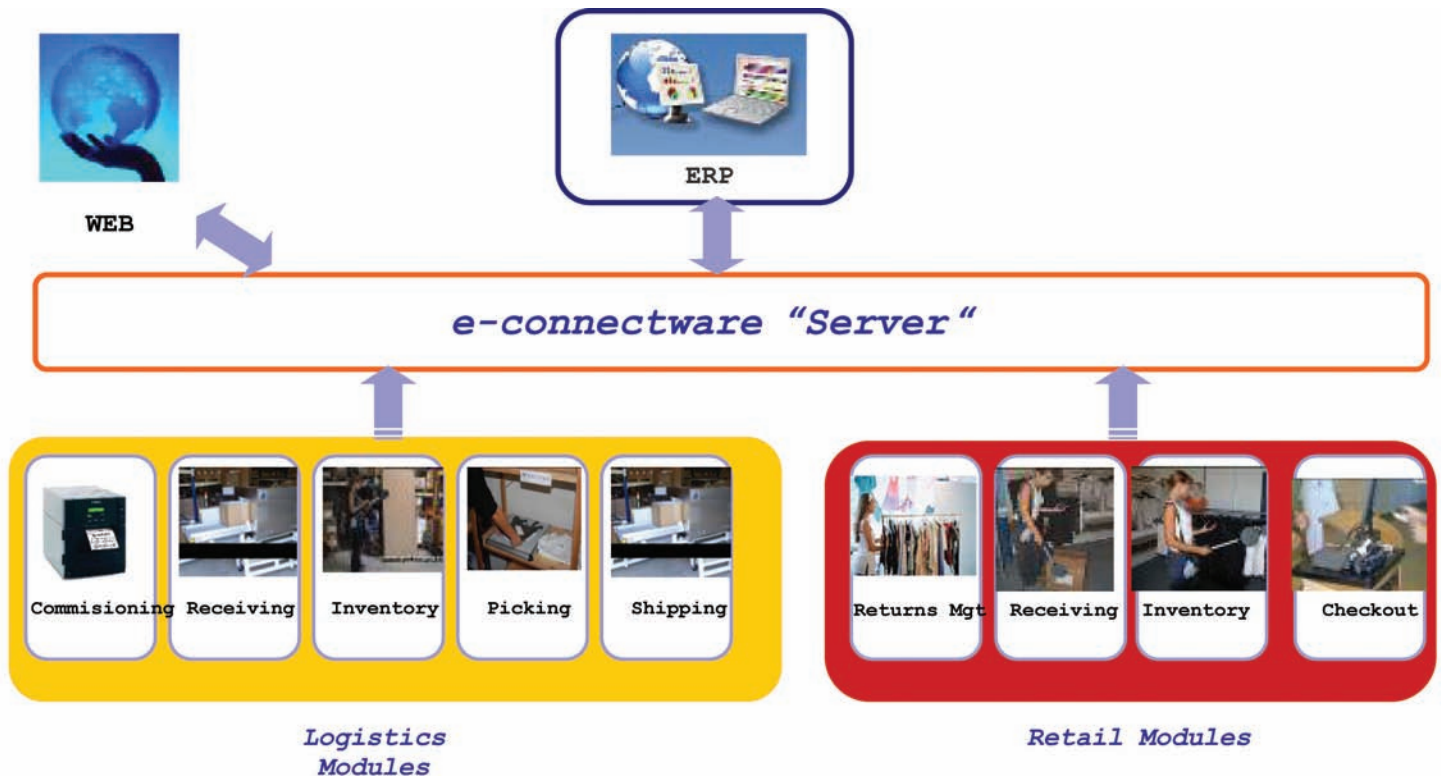
Data captured using TAGSYS' Portable Inventory Station to scan RFID-tagged items in the distribution center is uploaded to e-connectware's "DC Inventory Module" to accurately track and manage warehouse stock counts in the database.

■ DC Picking Module

This module compares RFID-tagged items intended for shipping against the actual pick list. Integrated with TAGSYS' SRU-400 Tabletop Reading Station, e-connectware's "DC Picking Module" helps reduce errors by ensuring that the correct items and quantities have been selected for shipping.

■ DC Shipping Module

This module reads the contents of each outbound box and compares it to the box's packing list. DC stock counts in the database are automatically adjusted by saving updated information about individual items as they are shipped to stores. (e-connectware's "DC Shipping Module" is compatible with TAGSYS' UTS 400 UHF Tunnels, TAGSYS' UHF Conveyor Station and TAGSYS' Portable UHF Station.)



E-CONNECTWARE RETAIL MODULES:

Installing these modules in individual stores delivers a complete and accurate view of product availability throughout the retail network.

- **Returns Module:**

This module tracks and saves information about damaged or unsold items returned by the stores to the distribution center. The “Returns Module” is fully compatible with TAGSYS’ SRU-400 Tabletop Reading Station.

- **Store Receiving Module:**

The “Store Receiving Module” compares the content of each inbound box against the ASN. Information about each RFID-tagged item is immediately tracked as store-level inventory, including merchandise not yet on display. (This module is compatible with TAGSYS Portable UHF Station.)

- **Store Inventory Module:**

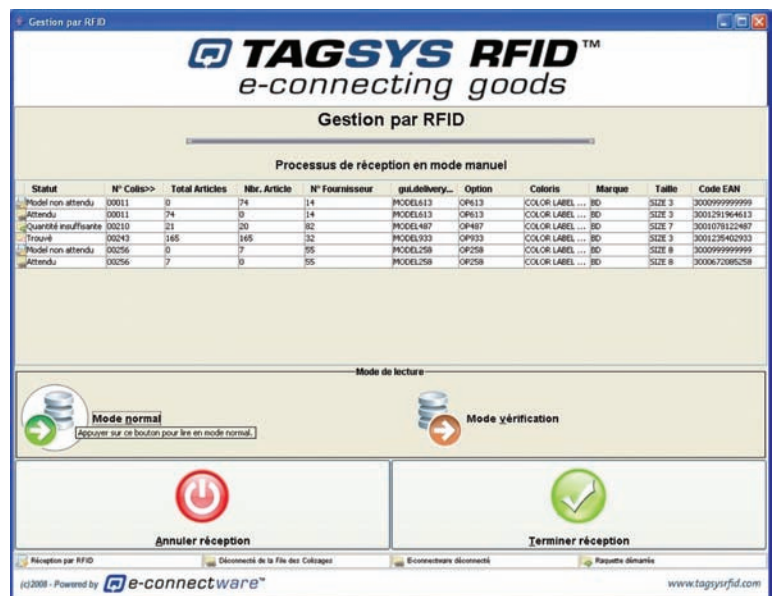
Data captured using TAGSYS’ Portable Inventory Station to scan RFID-tagged items in stores is uploaded directly to e-connectware’s “Store Inventory Module”. The Portable Inventory Station accurately scans over 7,000 items in approximately 20 minutes, while the “Store Inventory Module” provides managers and employees with precise information regarding in-store product availability. Leveraging this critical information streamlines store replenishments and helps avoid lost sales.

- **Checkout Module:**

Compatible with TAGSYS’ SRU-400 Tabletop Reading Station, this module integrates seamlessly with most retail POS software to quickly and accurately check out purchased items.



Linked to an RFID printer, e-connectware associates the RFID tag’s unique chip number with the item’s reference number



e-connectware tracks inbound and outbound shipments by comparing the contents of individual boxes against the Advanced Shipping Notice

Features	Logistics Modules					Store Modules			
	Commissioning	Receiving	Inventory	Picking	Shipping	Returns Mgt	Receiving	Inventory	Checkout
RFID Tag Encoding (EPC Gen2)	✓								
Recording Unique ID Tag Number with Reference Number	✓								
Defect Management	✓								
Automatic Comparison Between Box Content and ASN		✓		✓	✓		✓		
Error/ Mix up Alert		✓	✓	✓	✓	✓	✓	✓	✓
Shipment Content Validation		✓		✓	✓		✓		
Immediate RFID Data Record & Upload	✓	✓	✓	✓	✓	✓	✓	✓	✓
Inventory (partial or global)			✓					✓	
Item Research and Localization			✓					✓	
Track & Trace Recording	✓	✓	✓	✓	✓	✓	✓	✓	✓

TAGSYS Europe

Unit A / 11F
On Hing Building - 1 On Hing Terrace
Central Hong Kong
Phone: (+852) 2526 8303

TAGSYS Asia Ltd.

Unit A / 11F
On Hing Building - 1 On Hing Terrace
Central Hong Kong
Phone: (+852) 2526 8303

TAGSYS USA

Unit A / 11F
On Hing Building - 1 On Hing Terrace
Central Hong Kong
Phone: (+1) 267 882 4800

www.tagsysrfid.com